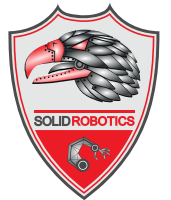




HOSE-PULL®

Intervention and technical assistance device



HOSE-PULL® is a versatile and very robust technical support tool. The device assists men in the field by greatly improving the mobility of a long fire hose. Thanks to its omnidirectional wheels, it can move over all types of terrain. By reducing the friction on the ground of the plant, it facilitates its movement to the different areas of intervention and reduces the stress during handling.

Key strenghts of HOSE-PULL®

-  Simply maneuvers
-  Crossing capacities
-  Large carrying capacities
-  Quick implementation (less than 5 sec)
-  entirely designed, machined and assembled in our workshop
-  Minimum maintenance (high pressure water jet wash)
-  Fits all pipe sizes
-  Easier, safer and faster assembly thanks to the two-in-one system "Slic Pins TM" (consisting of a pin+pin)



FEATURES

PARAMETER	DESCRIPTION
Material cradle + Wheels	PA66 GF-30
Diameter	70 mm / 110 mm
Max Temperature	80°C
Min Temperature	- 20°C
Wheels colors	Red / Black
Cradle colors	Red / Black
Warranty	1 year parts and labour



ACCESSORIES & OPTIONS

Lining of the cradle thanks to the connecting ring



- Double polymer cradle
- Modularity for all fire hose sizes
- Diameters available: 70 mm / 110 mm

PARTNERS



**ZONE DE SECOURS
LUXEMBOURG**



DEFENSE / SECURITY / CIVIL PROTECTION
ENGINEERING / ROBOTIC DISTRIBUTION CO.

SOLIDROBOTICS

A: 14, rue Charles V - 75004 Paris

P: +33 (0)621 041 751 / +33 (0)972 392 516

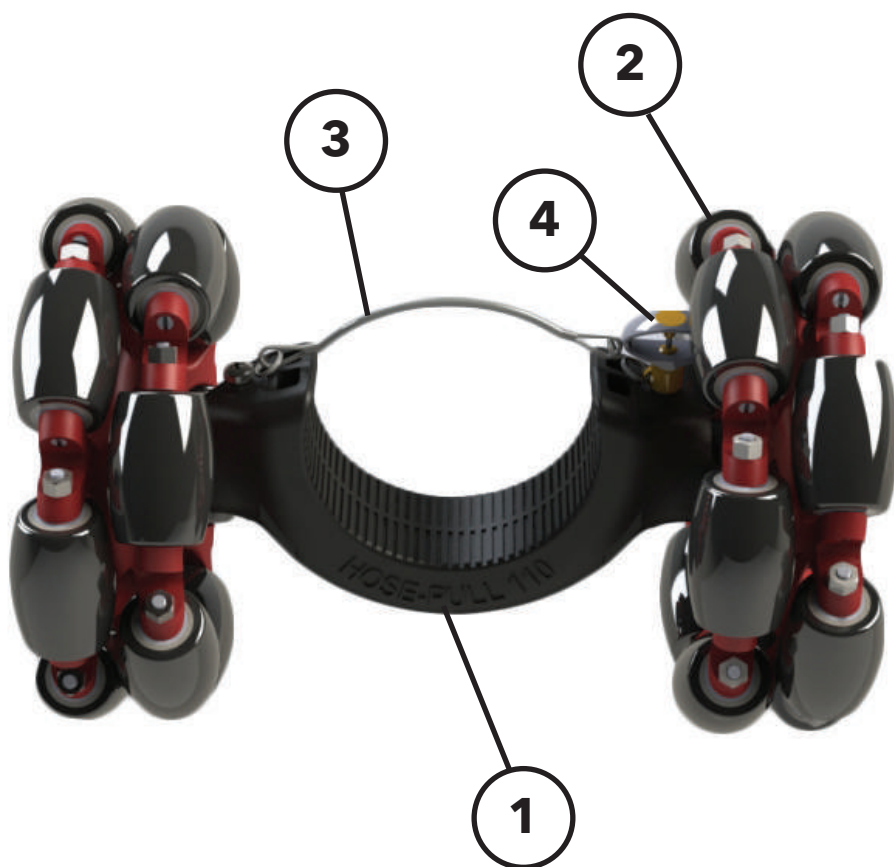
E: contact@solidrobotics.com

HOSE-PULL® is composed of a polymer cradle and two omnidirectional wheels allowing to move on all types of grounds.



FEATURES

DN70 weight	4,43 Kg
DN110 weight	4,59 Kg
DN70 color	Red
DN110 color	Black
Rims colors	Black / Red
Ref UGAP	2716089
Ref Gallin	G090062



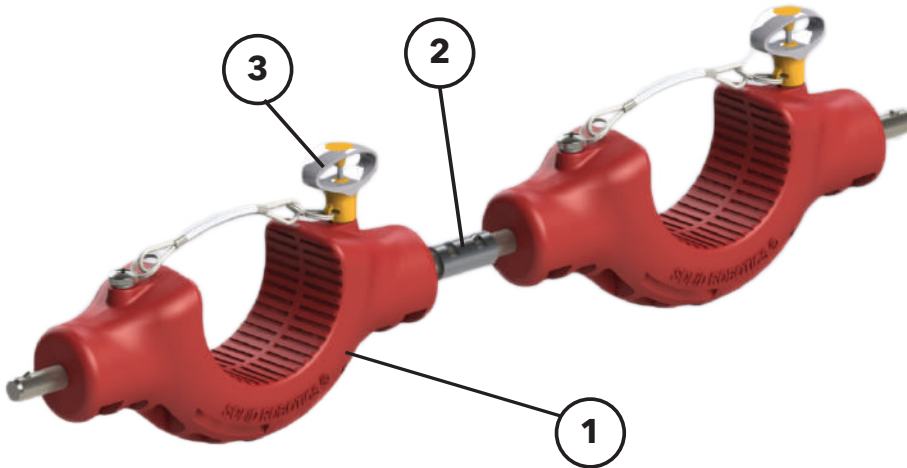
NOMENCLATURE

1	Cradle
2	Wheel
3	Steel retaining cable
4	Ball spindles

OPTIONS

The cradles can be twinned thanks to the coupling ring

● **Double version with coupling ring**



NOMENCLATURE

1	Cradle
2	Connecting ring
3	Ball spindles

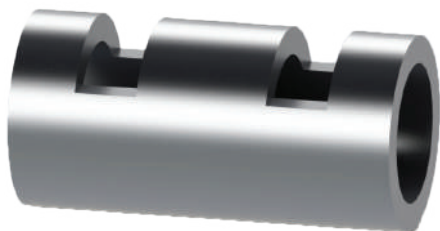
● **DN 110 cradle**



● **DN 70 cradle**



● **Machined aluminium coupling ring**



Weight: 5,09 g

● **One-piece machined polymer double cradle**



DN 70 or DN 110